

FORECASTLE REPORT



Newsletter of the Chicago Tri-Club Association

November 2024

• Pizza Bash Order •

It's not too soon to be thinking about what pizza toppings and beverage you wish to enjoy at the December meeting. At the November gathering, Bob Filipowski will be passing around a request sheet that you will be asked to add your name, toppings and drink to.



For those of you who won't be with us in November, but plan on attending the Holiday gathering, please contact Bob by no later than December 10th with your choices.

• A Little Help •

The year 2024 has not been a good year financially for our organization. Dwindling membership has resulted in a "red" bottom line. As you might have guessed, the holiday pizza bash is one of our biggest expenditures. To help offset this cost, Bob Filipowski is asking each member who attends this get-together to donate \$5.00, which will help ease the burden. Your club officers appreciate any help you can provide.

• Hard Times •

We recently learned of two model ship organizations that have shut down. The Nautical Society of Oregon Model Shipwrights officially closed its doors in October. The club treasury will be donated to the Oregon Maritime Museum. Unfortunately, the COVID pandemic was the "kiss of death" for this group. There apparently was no interest in restarting the club after the pandemic ended.

The Hyde Street Pier Model Shipwrights group in San Francisco has also ceased operations, although there are plans to keep the website going until at least early 2025. The fact that both organizations were affiliated with excellent maritime museums makes this situation even more difficult. However, the circumstances for the Hyde Street group were a little different.

Due to planned work on the *Eureka*, the club had to close its workshop and leave the museum vessel. Sadly, no other resources were provided for them to continue operating. So, for now, this Model Shipwrights group is no longer meeting, although some are still doing their individual model work. We wish you the best, mates, and hope that you will be able to resume operations in the not too distant future!

The Tri-Club Meeting Schedule

The NSD November Meeting



The November 6th North Shore Deadeyes virtual meeting will feature a truly unique video on constructing a model ship. This may sound mundane, but be prepared for some great graphics and excellent hints and tips. Proceedings will begin at 7:00 PM, but you can log on as early as 6:30.

The NRMS November Meeting



For November, the Nautical Research and Model Ship Society meeting will be a hybrid session. The face to face segment will be held at 237 S. Lincoln Street, Westmont, IL. Kurt Van Dahm requests that those who plan to attend in person let him know so they can be accommodated.

For those preferring to attend the virtual version, an invite will be sent out a few days before the November 9th meeting. Proceedings start at 7:00 PM, but you will be able to log on as early 6:30 PM.

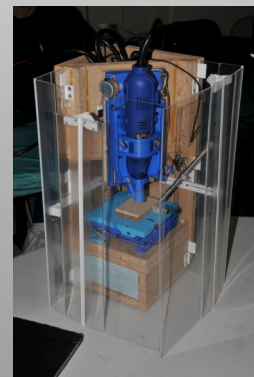
A Home-Built CNC Machine

Part II



The November face to face Midwest Model Shipwright meeting is scheduled for Wednesday, November 20th at 7:00 PM. Starting with the X/Y table, Paul McClay will go into more detail for constructing his CNC machine and working with the CAD program.

We will meet at the
Dasom Community Church
501 S. Emerson Street
Mount Prospect, IL
Doors open at 6:30 PM.



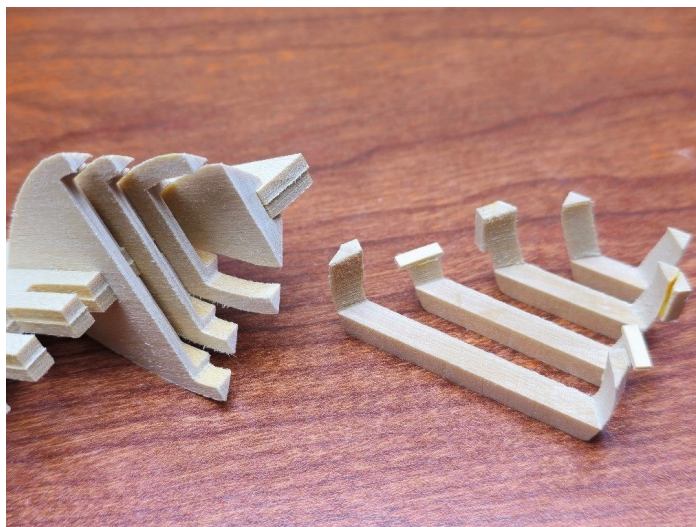
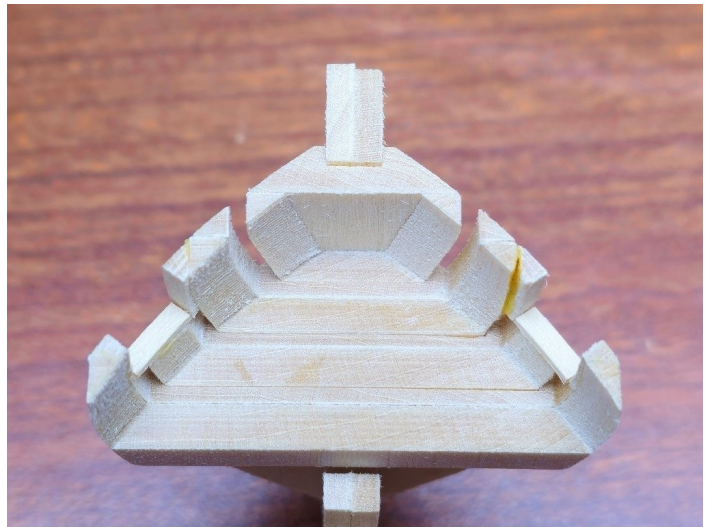


CNC Modeling Preview

By Paul McClay



Here are some examples of what Paul McClay's CNC milling machine is capable of doing. In November, Paul will continue his ongoing presentations on building and using one of these remarkable machines.



Continued on Page 3



CNC Modeling Preview

By Paul McClay



Minamil 3dp

a very compact, very inexpensive, very DIYable, very precise*

3D printed CNC "mill"

* relative to homebrew hobby machines



PLA and...
(and a bit of PETG)



motor+leadscrew
generic "80mm stroke"x2



6mm bearings
x10



6mm rod
300mm x4 -or- 400mm x3

28BYJ-48
the ubiquitous cheap
geared stepper



assemble with zip ties
(screws for tool clamp, Z motor,
and X/Y limit switches)

...and some string
UHMWPE FTW



CNC Modeling Preview

Photos By Paul McClay



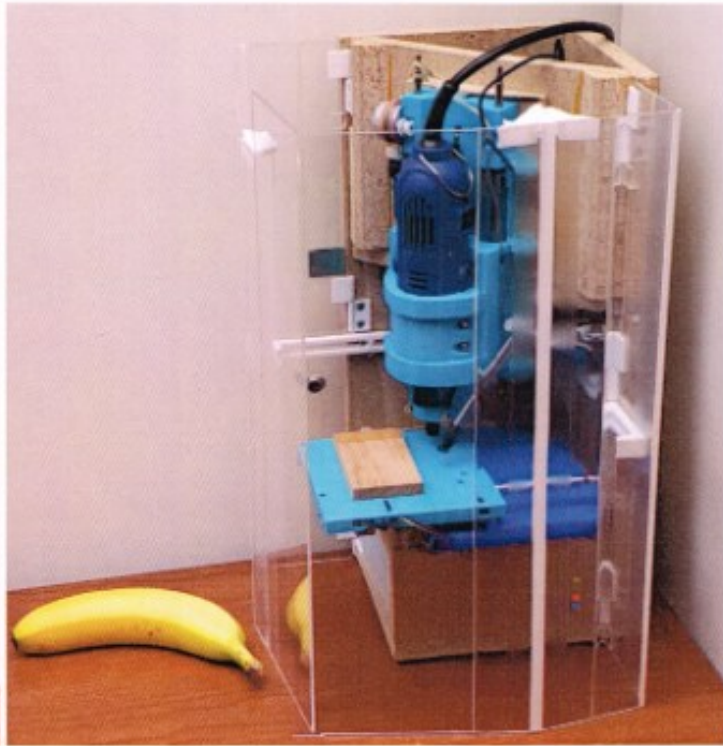
...and a Fancy Box

the CNC mechanics need only a simple frame to hold the two parts
this one is less simple

closed for storage

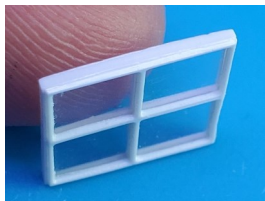


enclosed in operation



also in the box:

- all the electronics with Grbl & Bluetooth
- relay switched AC power for rotary tool
- chip blower
- filtered exhaust vent





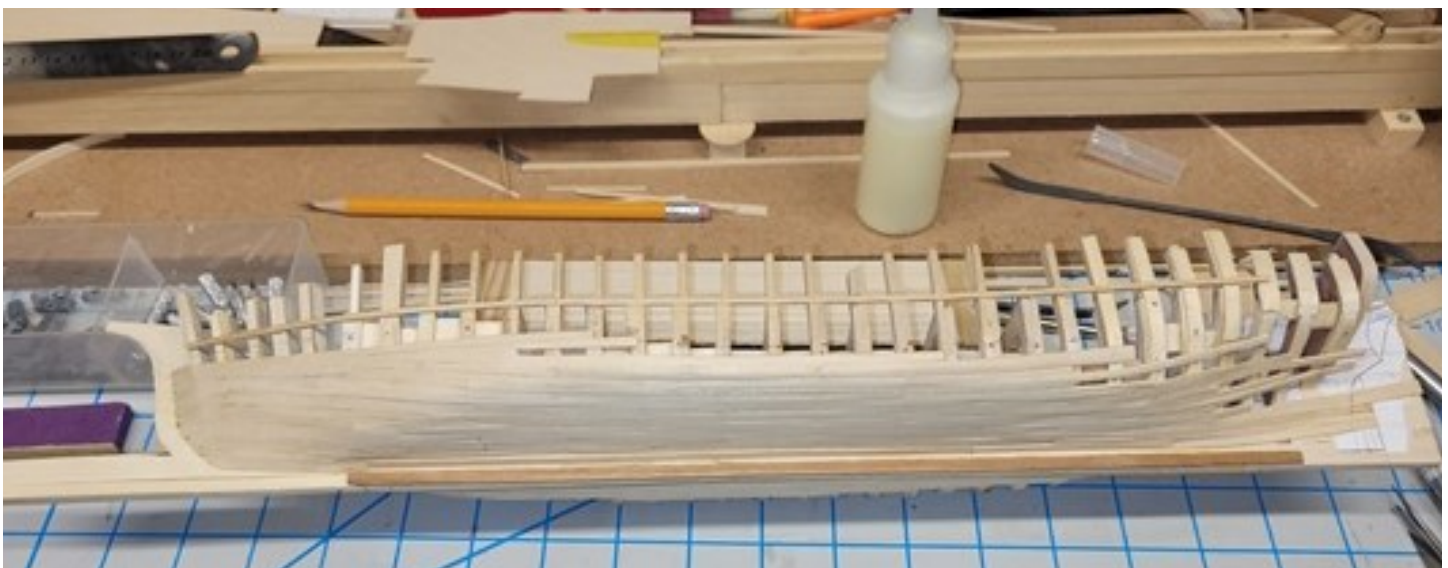
Ships on Deck



Lucia A. Simpson
by Dan Pacholski



Dan stated that thanks to a tip on bending planks longitudinally, he was able to get passed a perplexing problem. He soaked the planks and then bent them lengthwise over a piece of metal tubing. When dry, they were a perfect shape and fit!



Continued on Page 6



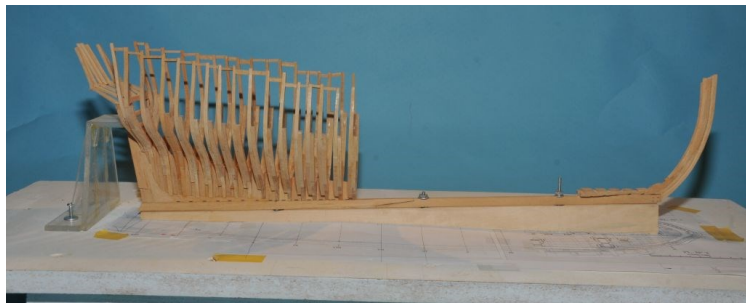
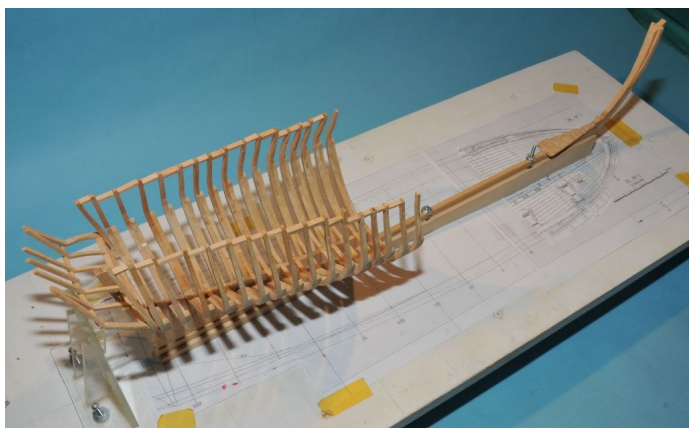
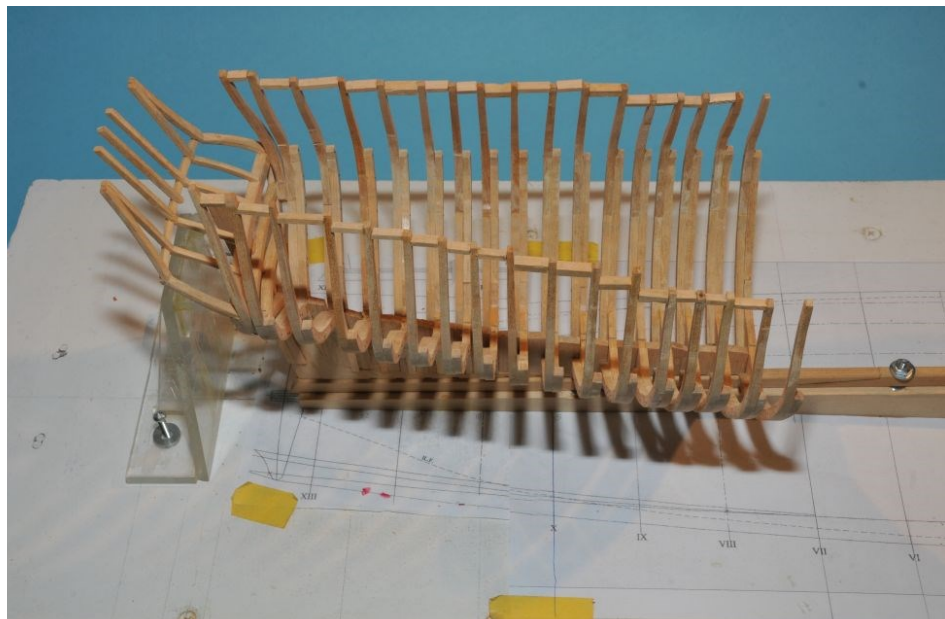
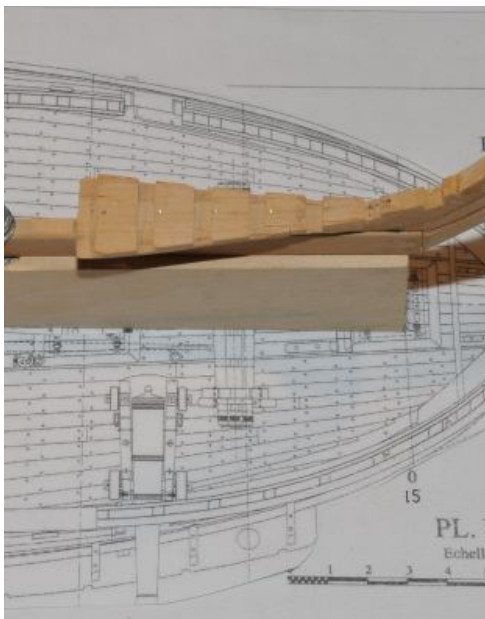
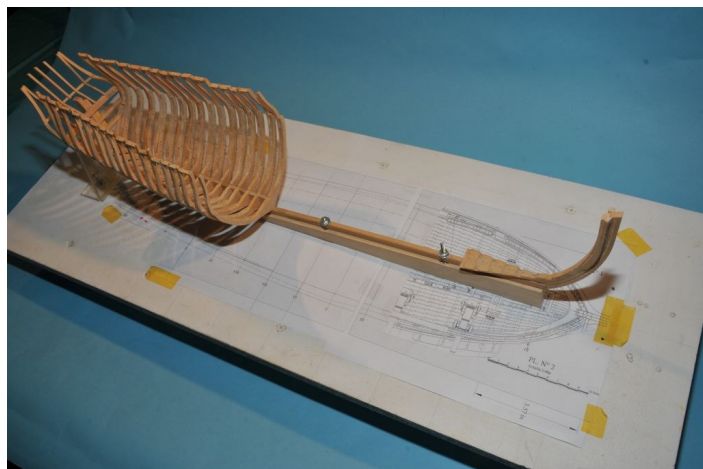
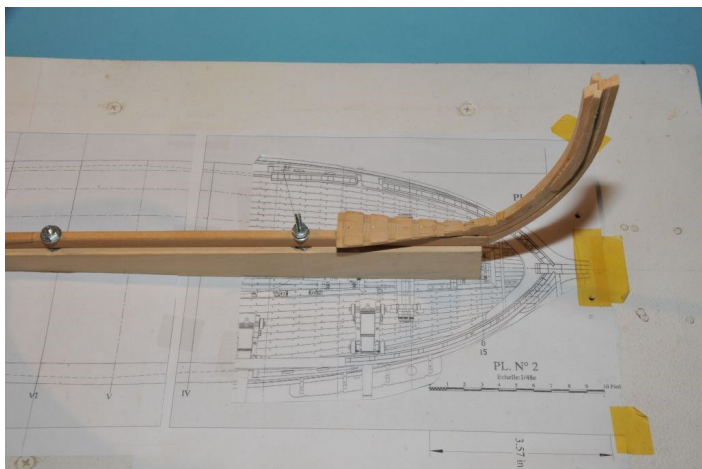
Ships on Deck

Photos By Bob Fryszak



La Volage -A 24-Gun French Sloop of War

by Toni Levine



Toni's latest project represents a French Sloop of War. The actual vessel did not have a successful career. She caught fire and sank off the Cape of Good Hope.

This 1:36 model is based on plans that were published by Ancre.

Continued on Page 7



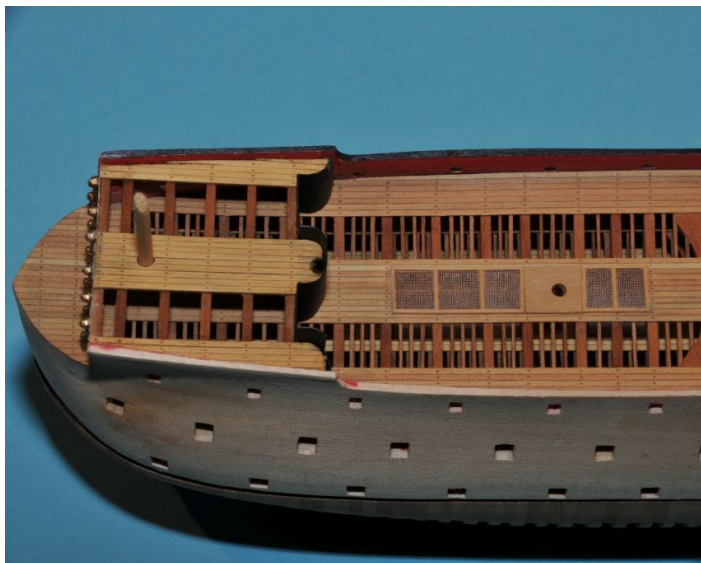
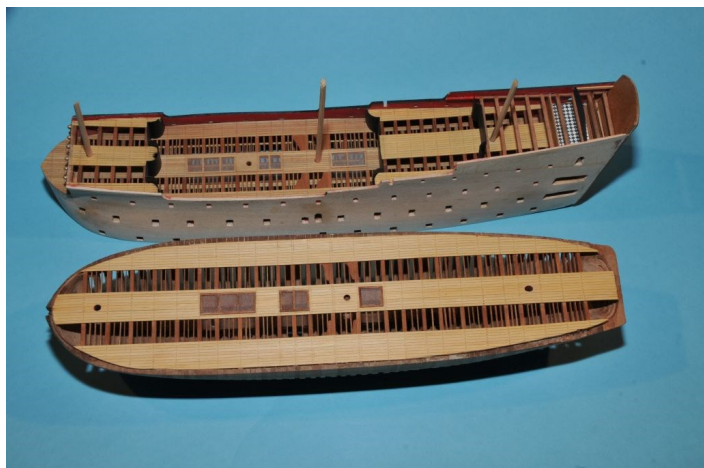
Ships on Deck

Photos By Bob Fryszak



Britannia circa 1683 Scale-1:197

by Gus Agustin



Continued on Page 8



Ships on Deck

Photos By Bob Fryszak



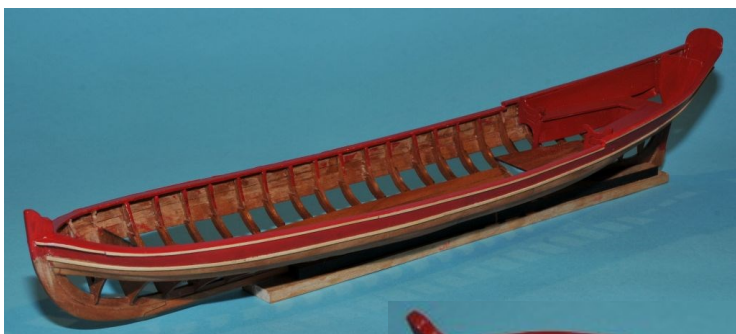
Golden Hind

By Keith Zeilenga



Queen Ann Royal Barge

By Allen Siegel



Continued on Page 9



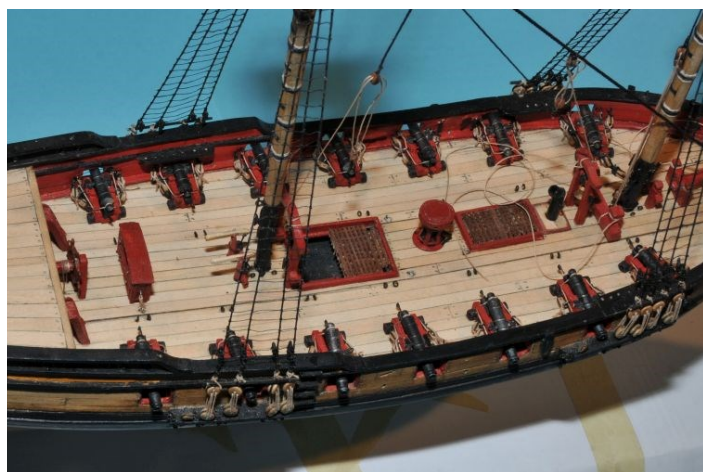
Ships on Deck

Photos by Bob Fryszak



Fair American

by Don Purney



Continued on Page 10



Ships on Deck



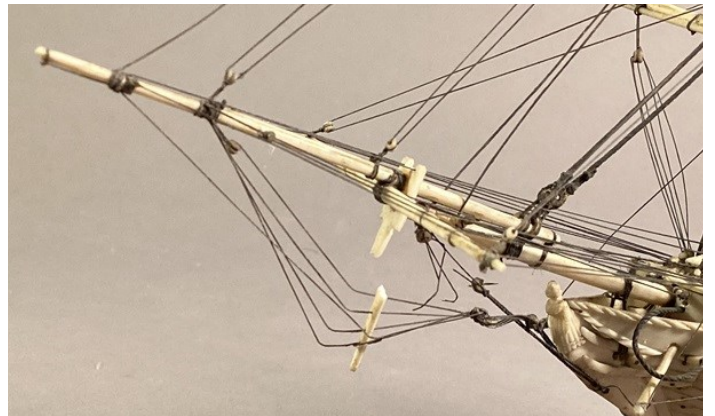
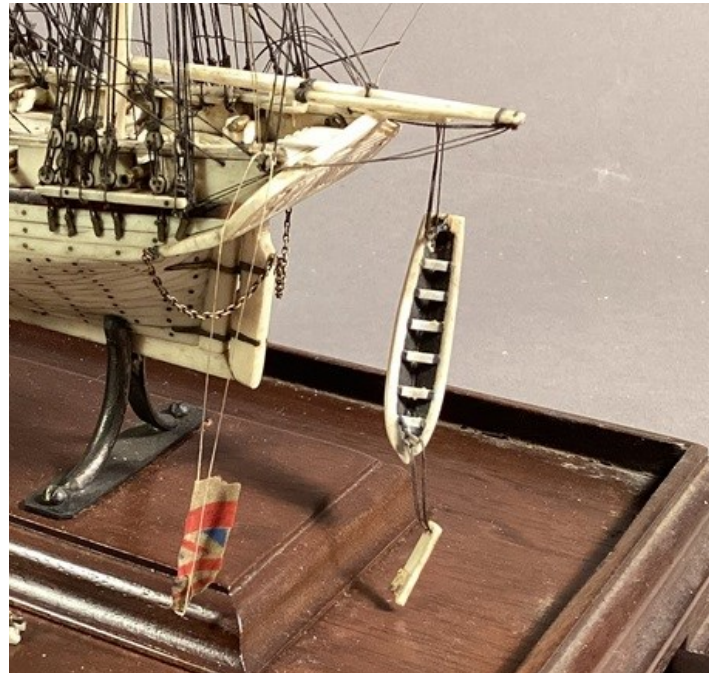
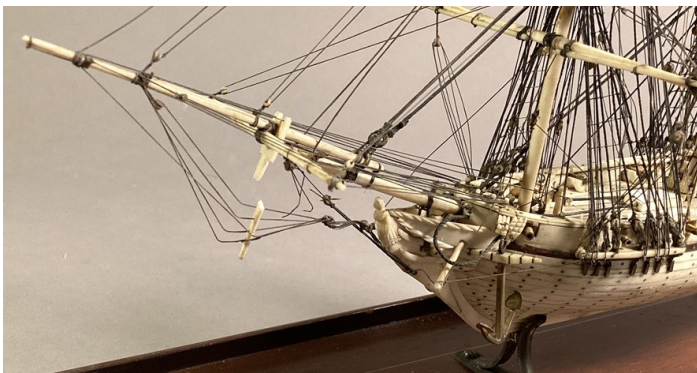
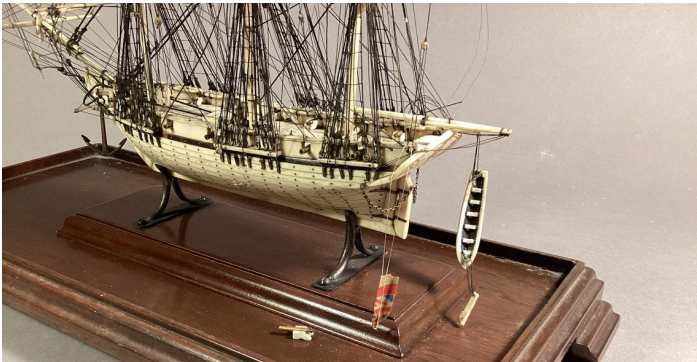
Restoring a Prisoner of War Model

by Gus Agustin

Restoring a 200 year old model can be quite a challenge. Invariably, the damage can involve broken masts, yards and rigging, not to mention missing pieces that need to be replaced and matched to the original.



This bone model happens to be Gus Agustin's third restoration of this type. It appears to represent a 14 gun sloop of war and based on the intact flag, looks like it was built during the Napoleonic War (circa 1801). The model's overall length is 11" and measures 7 1/2" from keel to truck. It is difficult to say whether it was built by an English or French Prisoner of War.



Continued on Page 11



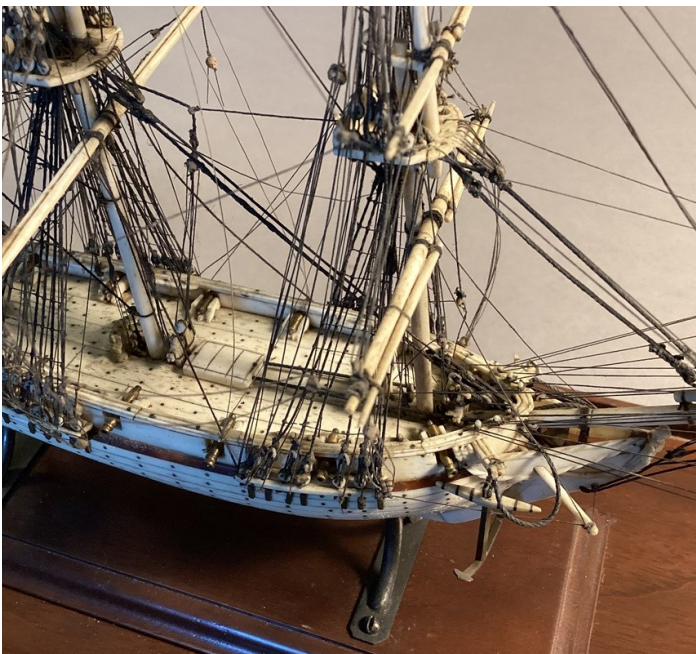
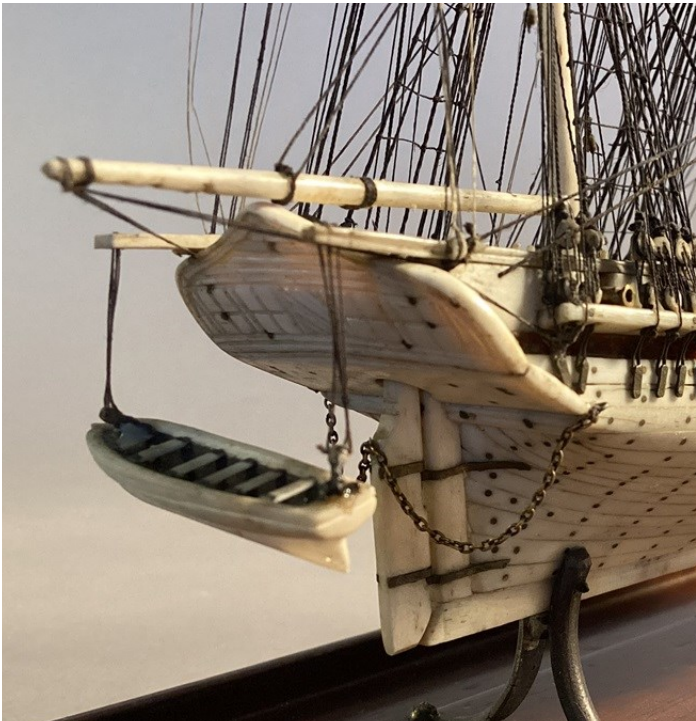
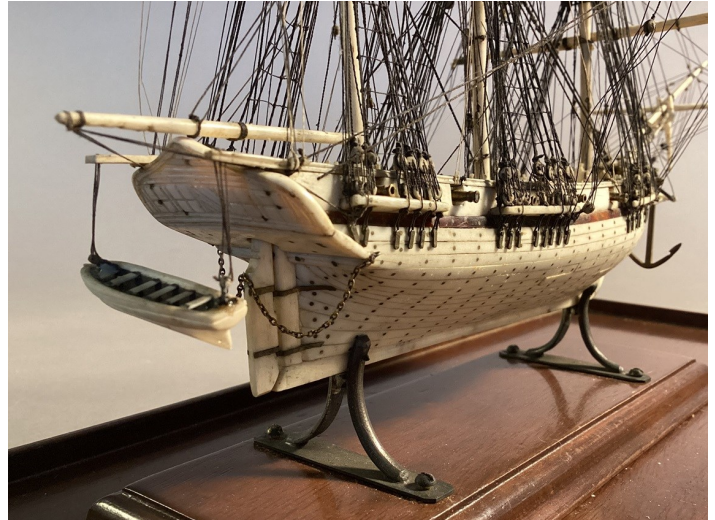
Ships on Deck



Restoring a Prisoner of War Model

by Gus Agustin

Originally, this model was supposed to be shown to the membership at the October meeting. However, Gus had second thoughts about that. Prior to being damaged, it was purchased at auction for \$25,000. It was extremely fragile, and he didn't want to take any chances.



Continued on Page 12



Certainly Not a POW Model

Submitted by Ralph Martin



We have a case of extremes here in spite of the fact that both the previous model and this offering are restorations. This model appears to be quite old, but Ralph Martin, our Associate Member who resides in Leawood, Kansas, stated that it dates back only to the 1950's. With the flags displayed at the fore and mizzen masts, the model appears to represent a Dutch vessel. Ralph thinks the model probably began its life in a tourist shop or home decor store.



Continued on Page 13



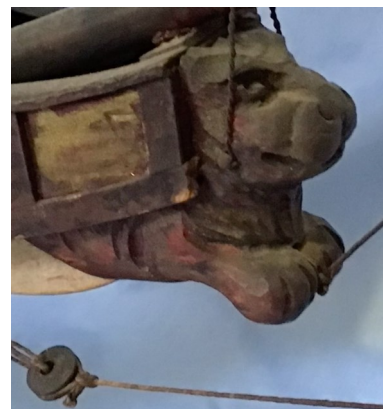
Certainly Not a POW Model

Submitted by Ralph Martin



The owner of the model had a sentimental attachment towards it and directed Ralph to do a complete rebuild. This included cleaning, rigging replacement, new sails and any necessary repairs. No drawings or original photos of the model were supplied. Problems included mold, grease spots and excessive dirt.

Construction techniques included the use of nails (1" to 1-3/4") and very old hot glue. The solid hull, with some planking, lacked fittings. All the rigging was done with bullseyes, and the pin rails used 1"-3/4" nails for belaying pins. One curious aspect of the model was the metal plating located at the bow. Did the model represent a vessel intended for Arctic exploration? We'll never know.



• Tri-Club Anti-Piracy Policy •



Here is a list of banned companies that have been pirating and duplicating kits, books, and plans from reputable manufacturers.

Quite often these disreputable companies offer their products at what appear to be reasonable prices, but these items are often poor in quality. Many of them do not have websites. They market their illegal products via the Internet on sites such as eBay.

If you are contemplating your next project, please check this list. If you are not sure, discuss it with Kurt Van Dahm before you commit to a purchase. For easy reference, this information will appear in all future issues of the *Forecastle Report*.

DryDock Models and Parts (Canada) selling for companies that pirate.

CN	ZHL
CF	RealTS
shi hai	Snail Model
4H Model	XinFeng
Moxing	Crown JD Model
Microcosm	JD Model LHQK
WN	Huasong
Jaocdoen	Shi Cheng
SC	woodenkit (Russian MFG)
DUJIAOSHOU	YengFan
LHQK	Unicorn Model
Master	YQ (YaunQing
	Modelship Dockyard (China)



Chicago Tri-Club Association Officers & Staff



NSD President - Rick Szydelko — szydelko@sbcglobal.net

NSD Vice President—Kurt Van Dahm — modelshipyard237@gmail.com

NSD Admiral Emeritus - Richard Williams—shipdoc27@comcast.net

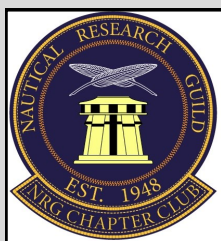
NSD Treasurer - Ed Urbanczyk—turbaned@comcast.net

NRMS President – Kurt Van Dahm – modelshipyard237@gmail.com

NRMS Vice President - Dan Cicero—dan_cicero@sbcglobal.net

NRMS Treasurer - Ed Urbanczyk—turbaned@comcast.net

NRMS Secretary -



MMS President - Bob Filipowski — logline2@gmail.com

MMS Vice President. - Bob Fryszak — rfryszak@luc.edu

MMS Treasurer - Rick Szydelko — szydelko@sbcglobal.net

MMS Secretary - Bob Sykes — (630) 766-6645

MMS Club Photographer: - Robert Fryszak — rfryszak@luc.edu

MMS Web Master - John Pocius...jphydroplane@gmail.com

www.midwestmodelshipwrights.com

